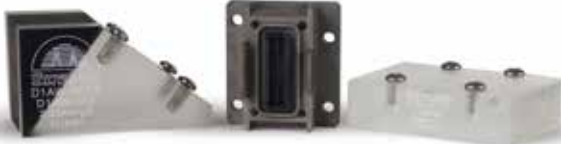




**Sonatest**

Inspect with confidence

**TRANSDUCER CATALOGUE**



# T SMA

## Small, Twin Angle Beam Shear Wave Transducers

### Features

- Dual angle beam shear wave contact transducer
- Rectangular, lead zirconate titanate crystal
- Max operating temperature 50°C / 120°F
- High temperature option available
- Medium damped for medium bandwidth

### Common Applications

- General Welds
- Tube & Pipe
- Forgings
- Castings



ANGLE BEAMS

Transducer Models					
Product Code	Description	Angle in Steel (°)	Frequency (MHz)	Crystal Diameter (mm / Inches)	Nearfield Length in Steel (mm / Inches)
T SMA4-45	Twin Shear 4 MHz 45°	45	4	3.5 x 10mm / 0.138 x 0.394"	31mm / 1.22"
T SMA4-60	Twin Shear 4Mhz 60°	60	4	3.5 x 10mm / 0.138 x 0.394"	31mm / 1.22"
T SMA4-70	Twin Shear 4Mhz 70°	70	4	3.5 x 10mm / 0.138 x 0.394"	31mm / 1.22"

Case Dimensions and Details				
Width/Diameter (mm / Inches)	Height (mm / Inches)	Length (mm)	Connector Options	Position Options
16mm / 0.63"	22mm / 0.866"	31mm / 1.22"	Z D	Top / Rear



**Sonatest**  
Leading Ultrasonics