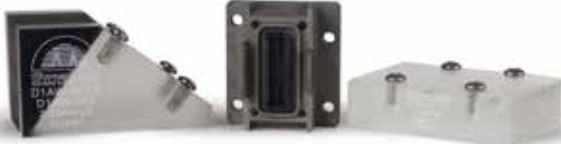




Sonatest

Inspect with confidence

TRANSDUCER CATALOGUE



TOFD

De-Mountable TOFD Transducer

Features

- De-mountable ToFD transducers
- Highly damped versions available for high temperature wedges, see the Non-Composite transducer list
- Max operating temperature range 50C° to 120F°
- High temperature wedge options up to 200°C available on request for standard and WREN wedges

Common Applications

- Weldments
- Weld root erosion inspection
- HTHA inspection



TOFD TRANSDUCERS

Piezo-composite ToFD Transducers including mini range				
Product Code	Description	Frequency (MHz)	Crystal Diameter (mm / Inches)	Probe size (mm / Inches)
CDTOF 2/02	ToFD transducer 2MHz, 6mm M12 thread size	2	6mm / 0.236"	10 x 30mm / 0.394 x 1.181"
CDTOF 2/04	ToFD transducer 2MHz, 12mm M20 thread size	2	12mm / 0.472"	17 x 30mm / 0.669 x 1.181"
CDTOF 3.5/03	ToFD transducer 3.5MHz, 9mm M20 thread size	3.5	9mm / 0.354"	17 x 30mm / 0.669 x 1.181"
CDTOF 3.5/04	ToFD transducer 3.5MHz, 12mm M20 thread size	3.5	12mm / 0.472"	17 x 30mm / 0.669 x 1.181"
CDTOF 5/01	ToFD transducer 5MHz, 3mm M12 thread size	5	3mm / 0.118"	10 x 30mm / 0.394 x 1.181"
CDTOF 5/02	ToFD transducer 5MHz, 6mm M12 thread size	5	6mm / 0.236"	10 x 30mm / 0.394 x 1.181"
CDTOF 5/03	ToFD transducer 5MHz, 9mm M20 thread size	5	9mm / 0.354"	17 x 30mm / 0.669 x 1.181"
CDTOF 5/04	ToFD transducer 5MHz, 12mm M20 thread size	5	12mm / 0.472"	17 x 30mm / 0.669 x 1.181"
CDTOF 7.5/01	ToFD transducer 7.5MHz, 3mm M12 thread size	7.5	3mm / 0.118"	10 x 30mm / 0.394 x 1.181"
CDTOF 7.5/02	ToFD transducer 7.5MHz 6mm M12 thread size	7.5	6mm / 0.236"	10 x 30mm / 0.394 x 1.181"
CDTOF 10/01	ToFD transducer 10MHz, 3mm M12 thread size	10	3mm / 0.118"	10 x 30mm / 0.394 x 1.181"
CDTOF 10/02	ToFD transducer 10MHz,6mm M12 thread size	10	6mm / 0.236"	10 x 30mm / 0.394 x 1.181"
CDTOF 15/01	ToFD transducer 15MHz, 3mm M12 thread size	15	3mm / 0.118"	10 x 30mm / 0.394 x 1.181"
CDTOF 15/02	ToFD transducer 15MHz,6mm M12 thread size	15	6mm / 0.236"	10 x 30mm / 0.394 x 1.181"
CDTOFM-5/01	Mini ToFD transducer 5MHz, 3mm M12 thread size	5	3mm / 0.118"	10 x 20mm / 0.394 x 0.787"
CDTOFM-5/02	Mini ToFD transducer 5MHz,6mm M12 thread size	5	6mm / 0.236"	10 x 20mm / 0.394 x 0.787"
CDTOFM-10/01	Mini ToFD transducer 10MHz, 3mm M12 thread size	10	3mm / 0.118"	10 x 20mm / 0.394 x 0.787"
CDTOFM-15/01	Mini ToFD transducer 15MHz,3mm M12 thread size	15	3mm / 0.118"	10 x 20mm / 0.394 x 0.787"

WREN De-Mountable ToFD Wedges with small contact area						
Product Code	Description	θ wedge Angle in Steel (°)	Probe thread diameter	Material	Width (mm / Inches)	Length (mm / Inches)
WREN-12/45	WREN Brass ToFD wedge 45°, M12 Thread	45	M12	Brass	30mm / 1.181"	9mm / 0.354"
WREN-12/60	WREN Brass ToFD wedge 60°, M12 Thread	60	M12	Brass	30mm / 1.181"	9mm / 0.354"
WREN-12/70	WREN Brass ToFD wedge 70°, M12 Thread	70	M12	Brass	30mm / 1.181"	9mm / 0.354"
WRENSSI-HT-12/45	WREN High temperature Stainless steel ToFD wedge 45°, M12 Thread	45	M12	Stainless Steel	30mm / 1.181"	9mm / 0.354"
WRENSSI-HT-12/60	WREN High temperature Stainless steel ToFD wedge 45°, M12 Thread	60	M12	Stainless Steel	30mm / 1.181"	9mm / 0.354"
WRENSSI-HT-12/70	WREN High temperature Stainless steel ToFD wedge 45°, M12 Thread	70	M12	Stainless Steel	30mm / 1.181"	9mm / 0.354"



Non-composite ceramic faced ToFD Transducers including mini range

Product Code	Description	Frequency (MHz)	Crystal Diameter (mm / Inches)	Transducer size (mm / Inches)
DTOF 2/04	ToFD transducer 2MHz, 12mm M20 thread size	2	12mm / 0.472"	10 x 30mm / 0.394 x 1.181"
DTOF 2/06	ToFD transducer 2MHz, 20mm M20 thread size	2	20mm / 0.787"	17 x 30mm / 0.669 x 1.181"
DTOF 3.5/03	ToFD transducer 3.5MHz, 9mm M20 thread size	3.5	9mm / 0.354"	17 x 30mm / 0.669 x 1.181"
DTOF 3.5/04	ToFD transducer 3.5MHz, 12mm M20 thread size	3.5	12mm / 0.472"	17 x 30mm / 0.669 x 1.181"
DTOF 5/01	ToFD transducer 5MHz, 3mm M12 thread size	5	3mm / 0.118"	10 x 30mm / 0.394 x 1.181"
DTOF 5/02	ToFD transducer 5MHz, 6mm M12 thread size	5	6mm / 0.236"	10 x 30mm / 0.394 x 1.181"
DTOF 5/03	ToFD transducer 5MHz, 9mm M20 thread size	5	9mm / 0.354"	17 x 30mm / 0.669 x 1.181"
DTOF 5/04	ToFD transducer 5MHz, 12mm M20 thread size	5	12mm / 0.472"	17 x 30mm / 0.669 x 1.181"
DTOF 7.5/01	ToFD transducer 7.5MHz, 3mm M12 thread size	7.5	3mm / 0.118"	10 x 30mm / 0.394 x 1.181"
DTOF 7.5/02	ToFD transducer 7.5MHz 6mm M12 thread size	7.5	6mm / 0.236"	10 x 30mm / 0.394 x 1.181"
DTOF 10/01	ToFD transducer 10MHz, 3mm M12 thread size	10	3mm / 0.118"	10 x 30mm / 0.394 x 1.181"
DTOF 10/02	ToFD transducer 10MHz,6mm M12 thread size	10	6mm / 0.236"	10 x 30mm / 0.394 x 1.181"
DTOF 15/01	ToFD transducer 15MHz, 3mm M12 thread size	15	3mm / 0.118"	10 x 30mm / 0.394 x 1.181"
DTOF 15/02	ToFD transducer 15MHz,6mm M12 thread size	15	6mm / 0.236"	10 x 30mm / 0.394 x 1.181"
DTOFM-5/01	Mini ToFD transducer 5MHz, 3mm M12 thread size	5	3mm / 0.118"	10 x 20mm / 0.394 x 0.787"
DTOFM-5/02	Mini ToFD transducer 5MHz,6mm M12 thread size	5	6mm / 0.236"	10 x 20mm / 0.394 x 0.787"
DTOFM-10/01	Mini ToFD transducer 10MHz, 3mm M12 thread size	10	3mm / 0.118"	10 x 20mm / 0.394 x 0.787"
DTOFM-15/01	Mini ToFD transducer 15MHz,3mm M12 thread size	15	3mm / 0.118"	10 x 20mm / 0.394 x 0.787"

De-Mountable ToFD Wedges

Product Code	Description	θ wedge Angle in Steel (°)	Transducer thread Ø	Material	Width (mm / Inches)	Length (mm / Inches)
WTOFI 12/45	Plastic ToFD wedge, 45°, M12 Thread	45°	M12	Plastic	40mm / 1.575"	20mm / 0.787"
WTOFI 12/60	Plastic ToFD wedge, 60°, M12 Thread	60°	M12	Plastic	40mm / 1.575"	20mm / 0.787"
WTOFI 12/70	Plastic ToFD wedge, 70°, M12 Thread	70°	M12	Plastic	40mm / 1.575"	20mm / 0.787"
WTOFI 20/45	Plastic ToFD wedge, 45°, M20 Thread	45°	M20	Plastic	40mm / 1.575"	20mm / 0.787"
WTOFI 20/60	Plastic ToFD wedge, 60°, M20 Thread	60°	M20	Plastic	40mm / 1.575"	20mm / 0.787"
WTOFI 20/70	Plastic ToFD wedge, 70°, M20 Thread	70°	M20	Plastic	40mm / 1.575"	20mm / 0.787"
WTOF-SSI-12/45	S/Steel ToFD wedge, 45°, M12 Thread	45°	M12	S/Steel	40mm / 1.575"	20mm / 0.787"
WTOF-SSI-12/60	S/Steel ToFD wedge, 60°, M12 Thread	60°	M12	S/Steel	40mm / 1.575"	20mm / 0.787"
WTOF-SSI-12/70	S/Steel ToFD wedge, 70°, M12 Thread	70°	M12	S/Steel	40mm / 1.575"	20mm / 0.787"
WTOF-SSI-20/45	S/Steel ToFD wedge, 45°, M20 Thread	45°	M20	S/Steel	40mm / 1.575"	20mm / 0.787"
WTOF-SSI-20/60	S/Steel ToFD wedge, 60°, M20 Thread	60°	M20	S/Steel	40mm / 1.575"	20mm / 0.787"
WTOF-SSI-20/70	S/Steel ToFD wedge, 70°, M20 Thread	70°	M20	S/Steel	40mm / 1.575"	20mm / 0.787"
WTOF-BI-12/45	Brass ToFD wedge, 45°, M12 Thread	45°	M12	Brass	40mm / 1.575"	20mm / 0.787"
WTOF-BI-12/60	Brass ToFD wedge, 60°, M12 Thread	60°	M12	Brass	40mm / 1.575"	20mm / 0.787"
WTOF-BI-12/70	Brass ToFD wedge, 70°, M12 Thread	70°	M12	Brass	40mm / 1.575"	20mm / 0.787"
WTOF-BI-20/45	Brass ToFD wedge, 45°, M20 Thread	45°	M20	Brass	40mm / 1.575"	20mm / 0.787"
WTOF-BI-20/60	Brass ToFD wedge, 60°, M20 Thread	60°	M20	Brass	40mm / 1.575"	20mm / 0.787"
WTOF-BI-20/70	Brass ToFD wedge, 70°, M20 Thread	70°	M20	Brass	40mm / 1.575"	20mm / 0.787"

S/Steel = Stainless Steel

iTOFD

Features

- Integrated Transducer and wedge, provides a faster and easier setup time
- Consistent sensitivity without the need for coupling between Transducer and wedge.
- Max operating temperature range 50C° to 120F°
- High temperature options available
- Contoung available on request



Common Applications

- Weldments
- Weld root erosion inspection
- HTHA inspection

ToFD TRANSDUCERS



Transducer Models					
Product Code	Description	Frequency (MHz)	Crystal Diameter (mm / Inches)	Integrated Wedge angle in steel (°)	Connector Options
ITOFD-001	Integrated ToFD probe and wedge 5MHz 3mm, 45°	5	3mm / 0.118"	45	D, S, Z
ITOFD-002	Integrated ToFD probe and wedge 5MHz 3mm, 60°	5	3mm / 0.118"	60	D, S, Z
ITOFD-003	Integrated ToFD probe and wedge 5MHz 3mm, 70°	5	3mm / 0.118"	70	D, S, Z
ITOFD-004	Integrated ToFD probe and wedge 5MHz 6mm, 45°	5	6mm / 0.236"	45	D, S, Z
ITOFD-005	Integrated ToFD probe and wedge 5MHz 6mm, 60°	5	6mm / 0.236"	60	D, S, Z
ITOFD-006	Integrated ToFD probe and wedge 5MHz 6mm, 70°	5	6mm / 0.236"	70	D, S, Z
ITOFD-007	Integrated ToFD probe and wedge 10MHz 3mm, 45°	10	3mm / 0.118"	45	D, S, Z
ITOFD-008	Integrated ToFD probe and wedge 10MHz 3mm, 60°	10	3mm / 0.118"	60	D, S, Z
ITOFD-009	Integrated ToFD probe and wedge 10MHz 3mm, 70°	10	3mm / 0.118"	70	D, S, Z
ITOFD-010	Integrated ToFD probe and wedge 10MHz 6mm, 45°	10	6mm / 0.236"	45	D, S, Z
ITOFD-011	Integrated ToFD probe and wedge 10MHz 6mm, 60°	10	6mm / 0.236"	60	D, S, Z
ITOFD-012	Integrated ToFD probe and wedge 10MHz 6mm, 70°	10	6mm / 0.236"	70	D, S, Z

LIMBO TOFD

Features

- Low profile integrated ToFD Transducer and wedges
- Consistent sensitivity without the need for coupling between Transducer and wedge.
- Max operating temperature range 50C° to 120F°
- Contouring available on request

Common Applications

- Poor access weldments
- Weldments
- HTHA
- Weld root erosion inspection



Transducer Models					
Product Code	Description	Frequency (MHz)	Crystal Diameter (mm / Inches)	Integrated Wedge angle in steel (°)	Connector Options
LIMBOTOFD-001	45° low-profile-TOFD 10M 3mm L	10	3mm / 0.118"	45	integrated
LIMBOTOFD-002	45° low-profile-TOFD 10M 3mm R	10	3mm / 0.118"	45	integrated
LIMBOTOFD-003	60° low-profile-TOFD 10M 3mm L	10	3mm / 0.118"	60	integrated
LIMBOTOFD-004	60° low-profile-TOFD 10M 3mm R	10	3mm / 0.118"	60	integrated
LIMBOTOFD-005	70° low-profile-TOFD 10M 3mm L	10	3mm / 0.118"	70	integrated
LIMBOTOFD-006	70° low-profile-TOFD 10M 3mm R	10	3mm / 0.118"	70	integrated
LIMBOTOFD-007	45° low-profile-TOFD 10M 6mm L	10	6mm / 0.236"	45	integrated
LIMBOTOFD-008	45° low-profile-TOFD 10M 6mm R	10	6mm / 0.236"	45	integrated
LIMBOTOFD-009	60° low-profile-TOFD 10M 6mm L	10	6mm / 0.236"	60	integrated
LIMBOTOFD-010	60° low-profile-TOFD 10M 6mm R	10	6mm / 0.236"	60	integrated
LIMBOTOFD-011	70° low-profile-TOFD 10M 6mm L	10	6mm / 0.236"	70	integrated
LIMBOTOFD-012	70° low-profile-TOFD 10M 6mm R	10	6mm / 0.236"	70	integrated
LIMBOTOFD-013	45° low-profile-TOFD 15M 3mm L	15	3mm / 0.118"	45	integrated
LIMBOTOFD-014	45° low-profile-TOFD 15M 3mm R	15	3mm / 0.118"	45	integrated
LIMBOTOFD-015	60° low-profile-TOFD 15M 3mm L	15	3mm / 0.118"	60	integrated
LIMBOTOFD-016	60° low-profile-TOFD 15M 3mm R	15	3mm / 0.118"	60	integrated
LIMBOTOFD-017	70° low-profile-TOFD 15M 3mm L	15	3mm / 0.118"	70	integrated
LIMBOTOFD-018	70° low-profile-TOFD 15M 3mm R	15	3mm / 0.118"	70	integrated
LIMBOTOFD-019	45° low-profile-TOFD 15M 6mm L	15	6mm / 0.236"	45	integrated
LIMBOTOFD-020	45° low-profile-TOFD 15M 6mm R	15	6mm / 0.236"	45	integrated
LIMBOTOFD-021	60° low-profile-TOFD 15M 6mm L	15	6mm / 0.236"	60	integrated
LIMBOTOFD-022	60° low-profile-TOFD 15M 6mm R	15	6mm / 0.236"	60	integrated
LIMBOTOFD-023	70° low-profile-TOFD 15M 6mm L	15	6mm / 0.236"	70	integrated
LIMBOTOFD-024	70° low-profile-TOFD 15M 6mm R	15	6mm / 0.236"	70	integrated

