



ALTISCAN V2

WIRELESS CRAWLER – UNLEASHED UTM

When it is about thickness measures at heights, constrains climb fast.

API653 and EEMUA159 codes require tank roof and shell UT measures. Those work at heights have been historically performed with scaffolds or rope access.

In the meantime, magnetic crawler solution have risen, allowing significative time, money and risk saves. As every innovation, those solutions have been limited by weather, reliability, and cost constrains.

In the meantime, experienced workforce is going low and new operators demand emulating, high productivity and resilience solutions.

The ALTISCAN V2 crawler pretend to define the new standard in WTM.





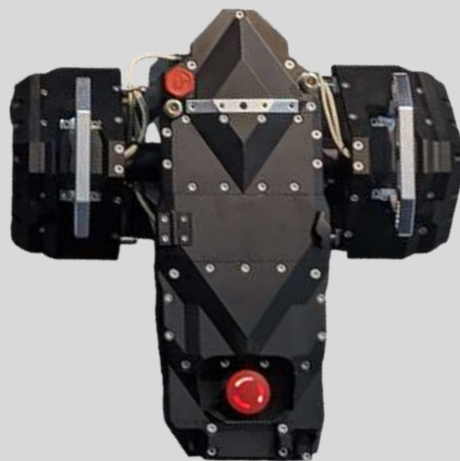
EVOLUTION FROM THE FIELD

ALTISCAN have assisted the inspection of thousands of tanks from Scandinavia to Africa on a wide range of roughness, thickness and weather conditions.

In close discussion with the crawlers operators and end users, 8 years of feedbacks have been collected to define the next generation.

FEATURES

- **Fast** : 20cm/s, 12m/min,
- **Strong** : rugged and IP67 weatherproof,
- **Safe** : 135kg magnetic hold,
- **Reliable** : no connector in standard version,
- **Accurate** : uncompromised ultrasonic resolution on difficult surfaces.



USE CASES

The ALTISCAN V2 performs inspection on storage tank shells, roofs, kilns, stacks, pressure vessels, ships, etc.



For a safer world.



SPECIFICATIONS

INSPECTED SURFACE

- Metal : carbon steel
- Wall temperature : 0°C to 70°C
- Plate thickness : 2 - 50mm
- Max coating thickness : 1mm
- Minimum structure diameter : 2m

CARRIER

- Dimensions : 45X40X20cm
- Weight : 14kg
- Magnetics : 135kg pull-up force
- IP67 : water resistant 30min. at 1m. depth
- Encoding precision : 0.1% FS
- Wireless range : 80m LOS
- Camera: low latency 720p – 4K in option

WATER TANK

- Couplant autonomy : 1L onboard – 40m
- Optional 20L for high attenuation plates
- HMI operated

BATTERY

- Tension : 24V DC
- Type : Lithium ion
- Autonomy : 3h/battery
- 3 batteries

ULTRASONIC MEASUREMENTS

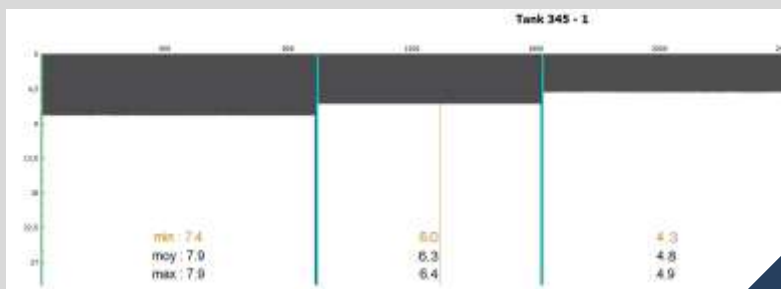
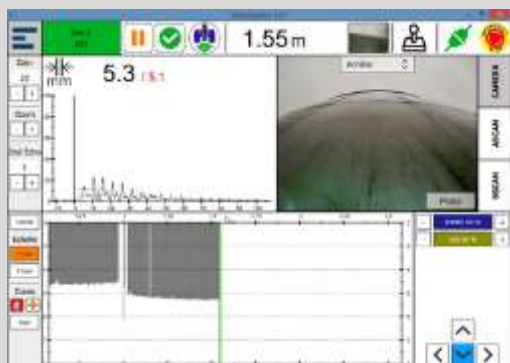
- Sensor type : ultrasonic, dual crystal
- Standard precision : +/-0,15mm
- Couplant : water
- Frequency/Diameter : 5Mhz/2x5,5mm
- Voltage : 0V - 200V
- Sampling frequency : 80Mhz
- Adjustable gain : 0 - 60dB
- Visualization : A&B-scan display
- Acquisition frequency : 1 measure/cm
- Gates : Adjustable
- Certification : NF EN ISO 15317 (UTM).

DATA ACQUISITION

- Hardware : Panasonic CF31 or CF19
- Saving format : .csv ; .jpg
- Datareport office software : A&B-scan, acquisition merge features.

OPERATING CONDITIONS

- Operating temperature : from 1° to 40°C
- Wind : <20knts
- Rain : Yes, please.





ABOUT US

ROBOPLANET develops NDT equipment since 2008 in a wide range of industries : Marine, Defense, Energy and Heavy Industry. We aim to provide safe, performant and cool equipment for NDT teams in their daily jobs. 14 years of experience, feedback and partnership with key asset owners and field experts allow us to build the future of NDT.

OTHER PRODUCTS

- **UT POLE** : 12 m range telescopic pole,
- **UT ROVER** : remote rover for no man entry areas,
- **Software** : automated data recording and analysis.

REFERENCES



CONTACT

ROBOPLANET | 6 rue Rose Dieng Kuntz, 44300 Nantes, FRANCE
+33 2 52 10 72 51 | contact@roboplanet.fr | <http://roboplanet.fr/>



For a safer world.